

## 230v CT Fan Motor Modification

*This modification is necessary to properly mount the replacement fan motor to the original range chassis mounting points.*

The tools needed for this process will be:

Cutting Blade



Adjustable Pliers

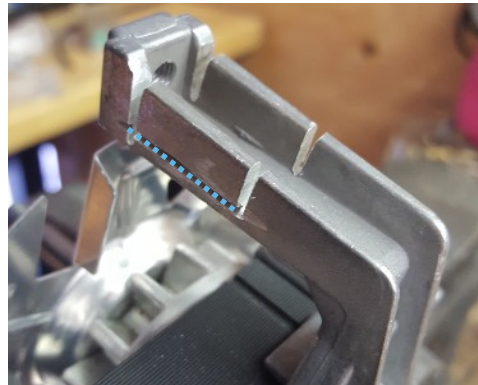
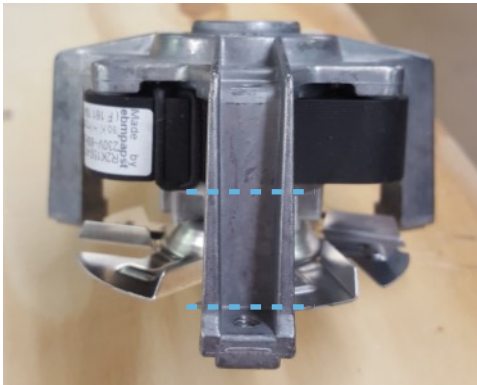


Metal File (flat, fine grain)



The replacement fan motor has thinner mounting foot flanges than the wider feet of the original fan motor legs. This modification allows space for a tool to tighten the original hex nut used to secure the motor mounting legs to the threaded mounting studs, or with the original hex screw mounting hardware.

1. Mark two lines across the tops of the side wall flanges with the cut-out notch at least 25mm up the height of the leg.
2. The aluminum flanges of the center leg should be carefully cut with a thin carbon cutting disk on a Dremel tool, a metal hacksaw blade, or similar. Make sure to not cut into the rear wall of the leg.



3. Score shallow grooves into the base of each flange segment at an ideal break line. Then snap the segments off using a pair of pliers.
4. Then clean up all the cut edges until they are filed smooth with a small flat metal file.

