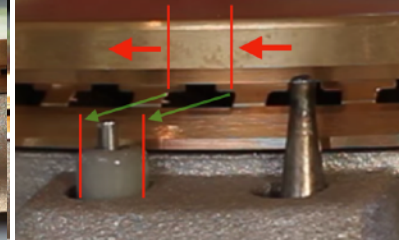
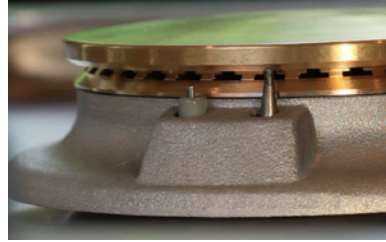


Top Burner Spark Electrode Adjustment

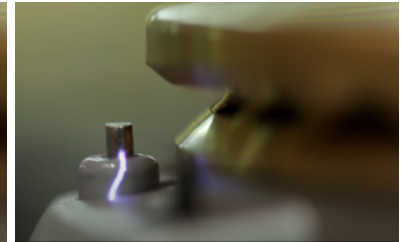
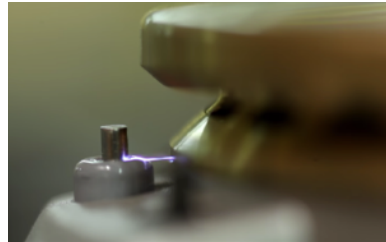
Written for range models manufactured from 2012 to present day.

If you find that a top burner is not igniting within 1-3 clicks, or not igniting at all, you may need to adjust the height of the spark electrode. This process is fast, simple, and does not require any tools.

1. First inspect if a brass cap flame port is in alignment with the spark electrode. If a flame port is misaligned to the electrode tip it may cause issues with ignition. You can easily spin the brass cap into alignment as shown. Then attempt to light that burner. If that does not resolve the issue, continue to step 2.



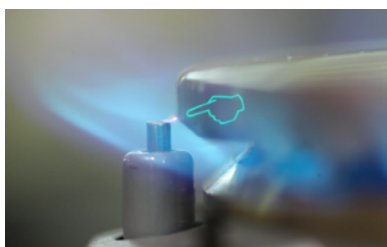
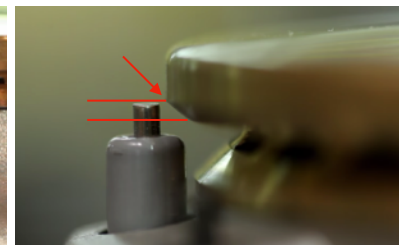
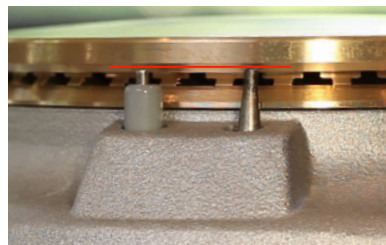
2. **[Use caution for the following step]** Visually watch where the spark is hitting on the burner cap or the base by looking sidelong at the electrode tip and depressing the knob until it clicks (do not rotate the knob, just press inward). **Do not touch the brass cap during this process!** If the electrode is set too low and is arcing to the bottom of the brass cap or the aluminum burner bowl beneath (like shown), or if the electrode is set too high and continues to spark without igniting the fuel mixture, the electrode height will need to be adjusted accordingly.



3. To adjust the height of the spark electrode: Remove the burner cap & base, then gently pull up on the electrode, use your free index finger to rotate the brass nut at the base of the spark electrode (Clockwise to raise the electrode & counter-clockwise to lower the electrode).



This is the general correct height of a spark electrode relative to the brass burner cap, right at the bottom of the leading edge of the brass cap and typically at the same height as the flame sensor tip. The electrode tip should be set between the top & bottom of the lower 45° edge of the burner rim.



The spark arc must cross through the fuel mixture stream exiting the flame ports to successfully ignite the burner.

(Note: the distance between the electrode tip and the brass cap should be enough to produce a strong arc. An 1/8" gap is ideal.)

4. Only one or two full rotations of the adjustment nut may be required to set the spark electrode to the optimal height. Try not to over-adjust the nut in either direction, or you may need to make another adjustment.

5. Once the burner fuel mixture is igniting within 1-3 clicks you are done. For optimal performance, we recommend evaluating the height of the electrodes and making these adjustments as needed on an annual basis.

If you have any questions during the adjustment process, please reach out to our support line @ 888.222.2930. Our Support staff are in the office 8:00am-4:30pm Monday-Friday